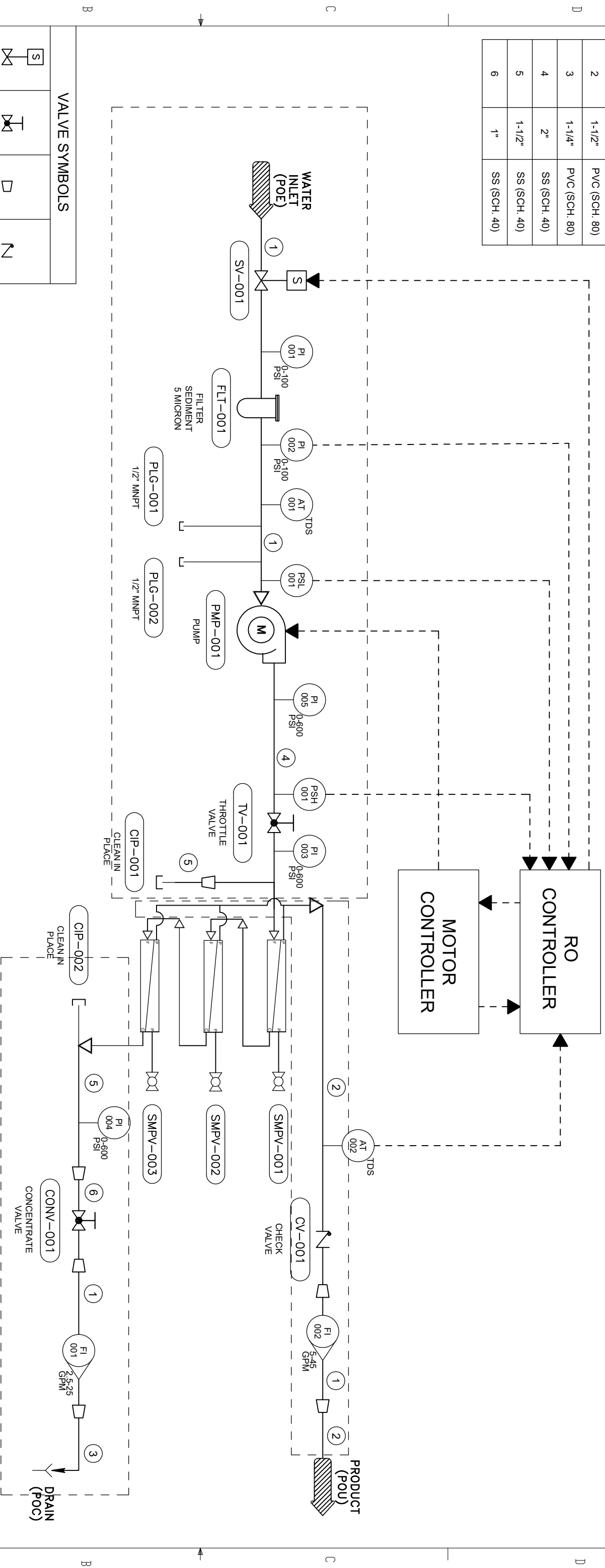


REV.	DESCRIPTION	DATE	APPROVED
A	FINAL RELEASE	4/6/16	

PIPING SIZE		
STREAM	SIZE	MATERIAL
1	2"	PVC (SCH. 80)
2	1-1/2"	PVC (SCH. 80)
3	1-1/4"	PVC (SCH. 80)
4	2"	SS (SCH. 40)
5	1-1/2"	SS (SCH. 40)
6	1"	SS (SCH. 40)



VALVE SYMBOLS

SOLENOID VALVE	GLOBE VALVE	REDUCER	CHECK VALVE

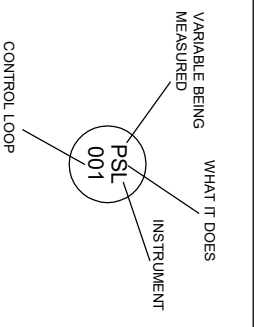
MISCELLANEOUS SYMBOLS

PUMP	FILTER	BALL VALVE	DRAIN

LINE SYMBOLS

MEMBRANE	PLUG

TAG NUMBER



ABBREVIATIONS

PI	PRESSURE INDICATOR
PSL	PRESSURE SWITCH LOW
AT	TDS TRANSMITTER
FI	FLOW INDICATOR (ROTAMETER)

POE - POINT OF ENTRY
POC - POINT OF CONNECTION
POU - POINT OF USE



AXEON Water Technologies
40980 County Center Drive, Suite 100
Temecula, CA 92591
Toll-Free: (800) 320-4074
Fax: (800) 609-0829

SYSTEM, RO, X2-3280,

NAME	DATE	SIZE	DWG NO.	REV
		B	PID	A

PROPRIETARY AND CONFIDENTIAL.
THE INFORMATION CONTAINED IN THIS DRAWING IS THE SOLE PROPERTY OF THE CONSENT COMPANY. ANY REPRODUCTION IN PART OR AS A WHOLE WITHOUT THE WRITTEN PERMISSION OF THE CONSENT COMPANY IS PROHIBITED.
© 2011 AXEON WATER TECHNOLOGIES